

HL-2000-CAL



*Calibrated Tungsten
Halogen Light Source*

Wavelength range: 350 - 1050 nm
Dimensions: 62 mm x 60 mm x 150 mm
Weight: 500 g
Output to bulb: 5 W
Power consumption: 600 mA @ 12 VDC
Bulb life: 5,000 hours
~ 50 hours (till recalibration is necessary)

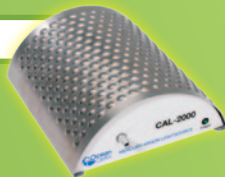
DH-2000-CAL



*Calibrated Deuterium
Tungsten Light Source*

Wavelength range: 220 - 1050 nm
Dimensions: 125.7 mm x 70 mm x 25.8 mm
Weight: 3.8 kg
Output to bulb: 25 / 20 W
Bulb life: 1,000 hours
~ 50 hours (till recalibration is necessary)

CAL-2000



*Mercury Argon
Calibration Light Source*

Wavelength range: 253 - 1700 nm
Dimensions: 130 mm x 125 mm x 50 mm
Weight: 410 g
Power consumption: 250 mA @ 12 VDC
Bulb life: ~ 3500 hours (at 20 mA)



Illuminate with Light Sources

Ocean Optics EMEA

Europe, Middle East & Africa

Regional Headquarters

Maybachstrasse 11
73760 Ostfildern
Germany

T: +49 711 34 16 96-0
F: +49 711 34 16 96-85
info@oceanoptics.eu
www.oceanoptics.eu

Sales & Support Centre

Geograaf 24
6921 EW Duiven
The Netherlands

T: +31 26 3190500
F: +31 26 3190505
Info@oceanoptics.eu
www.oceanoptics.eu

Locale Sales & Support

United Kingdom: + 44 1865 263180
Germany North: + 49 513 697 467 05
Germany South: + 49 711 341 696 0
Austria: + 43 226 220 673
France: + 33 148 576 136

090717 Ocean Optics © - All rights reserved - Specifications are subject to change without notice.
Trademarks are the property of Ocean Optics BV or their respective owners.



Ocean Optics

Smart | Innovative | Flexible | Solvers

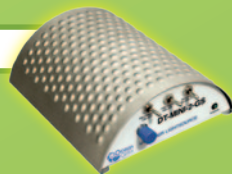
HL-2000



Continuous Tungsten Halogen Light Source

Wavelength range: 350 - 2000 nm
Output to bulb: 5 W (20 W HP - version)
Dimensions: 62 mm x 60 mm x 150 mm
Drift: < 0,3% per hour
Bulb life: 1,500 hours (10,000 hours LL - version)
Versions: long-life (LL), high power (HP)
Options: shutter, filterholder, attenuator (FHSA)

DT-MINI-2-GS



Mini Deuterium Tungsten Halogen Light Sources

Wavelength range: 200 - 2000 nm
Output to bulb: 3.8 W / 1.2 W (deuterium / tungsten)
Dimensions: 140 mm x 50 mm x 125 mm
Bulb life: 1,500 hours (deuterium / tungsten)
Included: separated control of deuterium and tungsten halogen light source / shutter

D-2000



Tungsten Halogen Light Source

Wavelength range: 215 - 400 nm
DUV option range: 190 - 400 nm
Output to bulb: 25 W
Dimensions: 150 mm x 135 mm x 319 mm
Drift: $\pm 0,01\%$ per hour
Bulb life: 1,000 hours

DH-2000



Deuterium Tungsten Light Source

Wavelength range: 215 - 2000 nm
DUV option range: 190 - 2000 nm
Output to bulb: 25 / 20 W
Dimensions: 150 mm x 135 mm x 319 mm
Drift: $\pm 0,01\%$ per hour
Bulb life: 1,000 hours
Options: shutter, filter holder, remote (TTL)

DH-2000-BAL



Balanced Deuterium Tungsten Light Source

Wavelength range: 230 - 2000 nm
Output to bulb: 25 / 20 W
Dimensions: 150 mm x 135 mm x 319 mm
Drift: < 0.01% per hour
Bulb life: 1,000 hours
Included: shutter

PX-2



Pulsed Xenon Light Source

Wavelength range: 220-750 nm
Output to bulb: 9.9 W
Dimensions: 153.4 mm x 104.9 mm x 40.9 mm
Pulse duration: 5 microseconds
Trigger input: External pulse
Bulb life: 10⁹ pulses (estimated 230 days continuous operation at 50 Hz pulse rate)

HPX-2000



High Powered CW Xenon Light Source

Wavelength range: 185 - 2000 nm
Output to bulb: 40 W
Dimensions: 145 mm x 165 mm x 260 mm
Bulb life: 1,000 hours minimum, 2,000 hours typical
Included: shutter, filter holder

LS-450



Pulsed Blue LED Light Source

Wavelength range: 380 - 640 nm
Output: 50 μ W with a 600 μ m optical fiber
Dimensions: 62 mm x 60 mm x 150 mm
Additional LEDs for the LS-450: LED-380, LED-395, LED-470, LED-518, LED-590, LED-640, LED-WHITE

RAMAN-LASER



785 nm Multimode Laser Subsystem

Peak wavelength: 785 nm
Output: 5.5 W
Dimensions: 76.2 mm x 63.5 mm x 17.5 mm
Connector: FC connector or SMA 905

All light sources are also available in an OEM version